

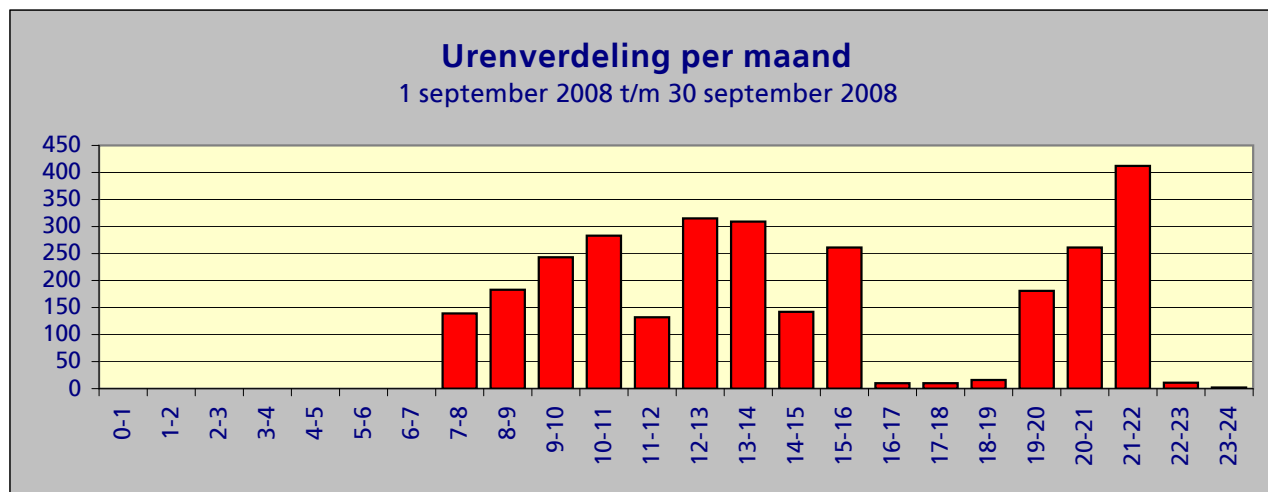
**Samenvatting meetgegevens meetpost 92 - Lijnden**  
**Periode: 1 september 2008 t/m 30 september 2008**

**Top 10 grootste LAmax**

| Datum     | Tijd     | LAmax | Sel  | Leq  | duur | baan | type | A/D |
|-----------|----------|-------|------|------|------|------|------|-----|
| 25-sep-08 | 15:34:54 | 89,8  | 99,1 | 82,8 | 42   | 36C  | B742 | D   |
| 24-sep-08 | 12:44:43 | 88,3  | 97,3 | 81,0 | 43   | 36C  | B744 | D   |
| 26-sep-08 | 15:40:10 | 88,1  | 97,7 | 81,5 | 42   | 36C  | B742 | D   |
| 21-sep-08 | 15:47:18 | 88,1  | 97,0 | 81,5 | 36   | 36C  | B742 | D   |
| 24-sep-08 | 12:39:38 | 87,9  | 97,5 | 78,9 | 72   | 36C  | MD82 | D   |
| 16-sep-08 | 13:03:19 | 87,8  | 97,8 | 80,2 | 58   | 36C  | MD82 | D   |
| 26-sep-08 | 14:53:16 | 87,8  | 96,5 | 79,9 | 46   | 36C  | MD11 | D   |
| 22-sep-08 | 12:40:58 | 87,7  | 97,2 | 81,2 | 40   | 36C  | MD11 | D   |
| 16-sep-08 | 12:58:42 | 87,4  | 96,8 | 80,6 | 42   | 36C  | MD11 | D   |
| 27-sep-08 | 12:49:17 | 87,1  | 97,2 | 79,9 | 53   | 36C  | MD82 | D   |

**Maandtotaal verdeeld over etmaal**

| Tijdstip      | Aantal      |
|---------------|-------------|
| 0-1           | 0           |
| 1-2           | 0           |
| 2-3           | 0           |
| 3-4           | 0           |
| 4-5           | 0           |
| 5-6           | 0           |
| 6-7           | 0           |
| 7-8           | 139         |
| 8-9           | 183         |
| 9-10          | 243         |
| 10-11         | 283         |
| 11-12         | 132         |
| 12-13         | 315         |
| 13-14         | 309         |
| 14-15         | 142         |
| 15-16         | 261         |
| 16-17         | 10          |
| 17-18         | 10          |
| 18-19         | 16          |
| 19-20         | 181         |
| 20-21         | 261         |
| 21-22         | 412         |
| 22-23         | 11          |
| 23-24         | 2           |
| <b>Totaal</b> | <b>2910</b> |

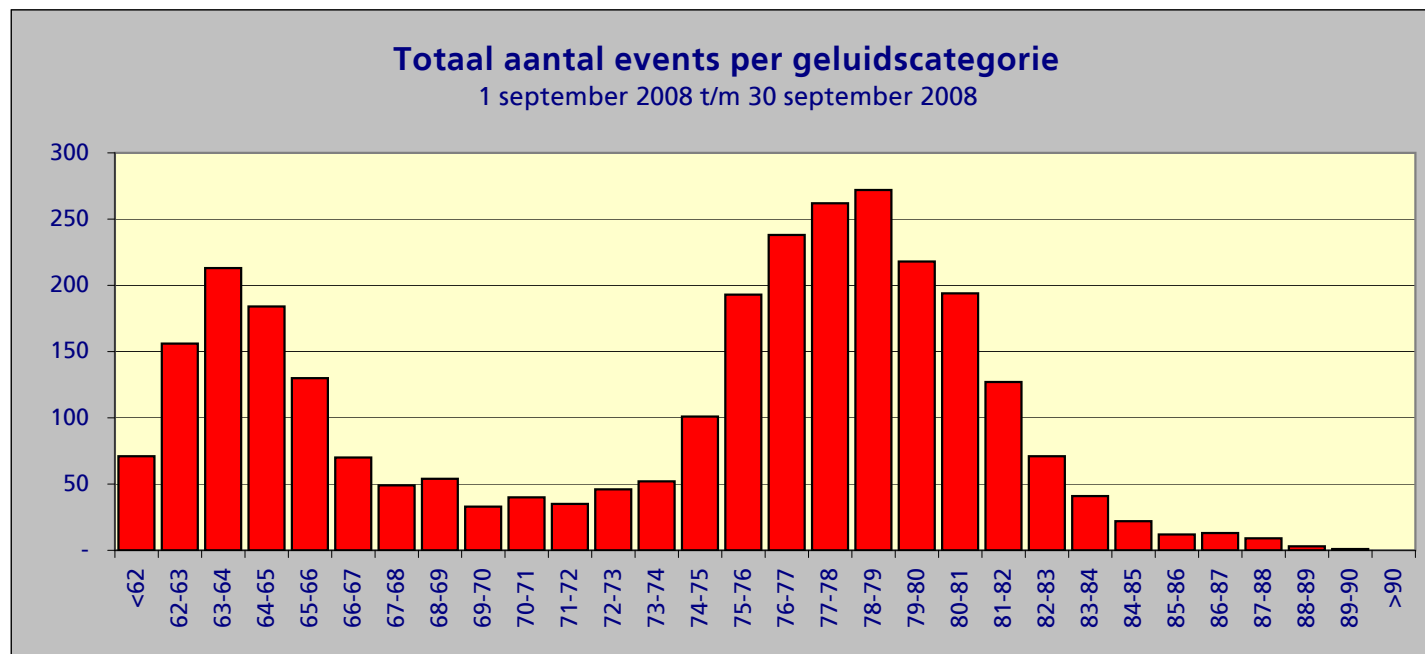


**Maandtotaal verdeeld over etmaal**  
1 september 2008 t/m 30 september 2008

| Tijdstip      | Aantal      |
|---------------|-------------|
| 23 - 06       | 2           |
| 06 - 23       | 2908        |
| <b>Totaal</b> | <b>2910</b> |

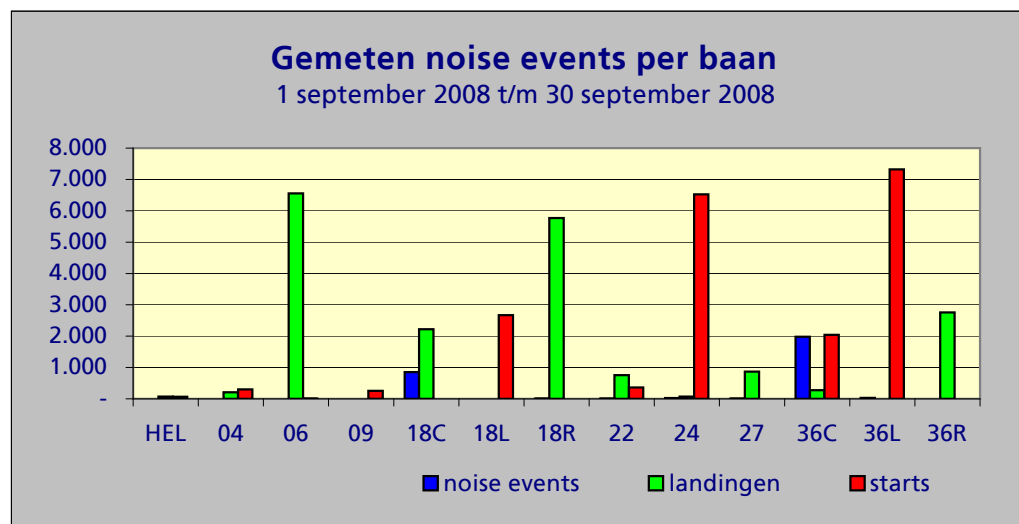
### Maandtotaal verdeeld over LAmax

| LAmax         | Aantal      |
|---------------|-------------|
| <62           | 71          |
| 62-63         | 156         |
| 63-64         | 213         |
| 64-65         | 184         |
| 65-66         | 130         |
| 66-67         | 70          |
| 67-68         | 49          |
| 68-69         | 54          |
| 69-70         | 33          |
| 70-71         | 40          |
| 71-72         | 35          |
| 72-73         | 46          |
| 73-74         | 52          |
| 74-75         | 101         |
| 75-76         | 193         |
| 76-77         | 238         |
| 77-78         | 262         |
| 78-79         | 272         |
| 79-80         | 218         |
| 80-81         | 194         |
| 81-82         | 127         |
| 82-83         | 71          |
| 83-84         | 41          |
| 84-85         | 22          |
| 85-86         | 12          |
| 86-87         | 13          |
| 87-88         | 9           |
| 88-89         | 3           |
| 89-90         | 1           |
| >90           | -           |
| <b>Totaal</b> | <b>2910</b> |



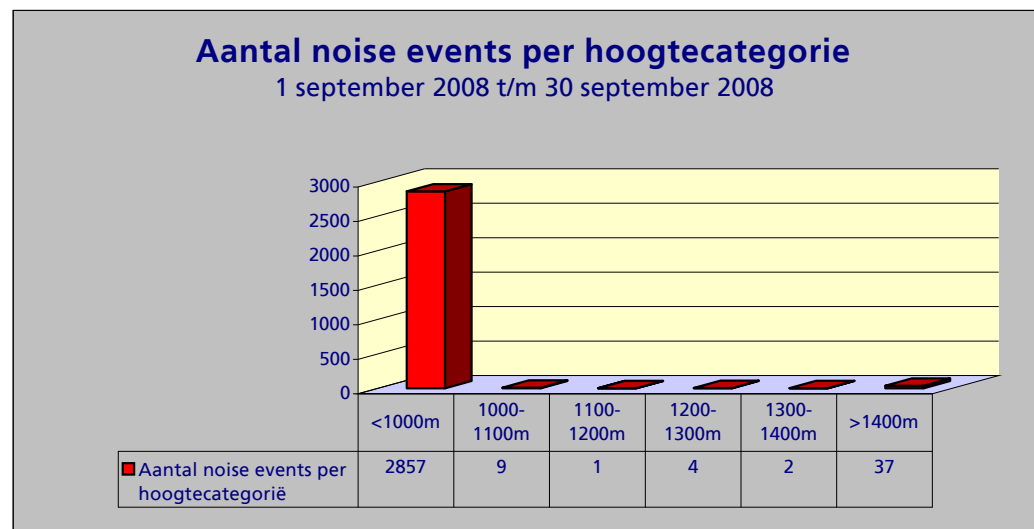
Maandtotaal verdeeld per baan (incl. bewegingen per baan)

| Baan          | noise events | landingen     | starts        |
|---------------|--------------|---------------|---------------|
| HEL           | -            | 73            | 66            |
| 04            | -            | 209           | 301           |
| 06            | 2            | 6.557         | 6             |
| 09            | -            | -             | 256           |
| 18C           | 852          | 2.223         | -             |
| 18L           | -            | -             | 2.672         |
| 18R           | 5            | 5.769         | -             |
| 22            | 5            | 755           | 361           |
| 24            | 27           | 74            | 6.526         |
| 27            | 5            | 867           | 1             |
| 36C           | 1.983        | 274           | 2.043         |
| 36L           | 31           | -             | 7.319         |
| 36R           | -            | 2.758         | -             |
| <b>Totaal</b> | <b>2910</b>  | <b>19.559</b> | <b>19.551</b> |



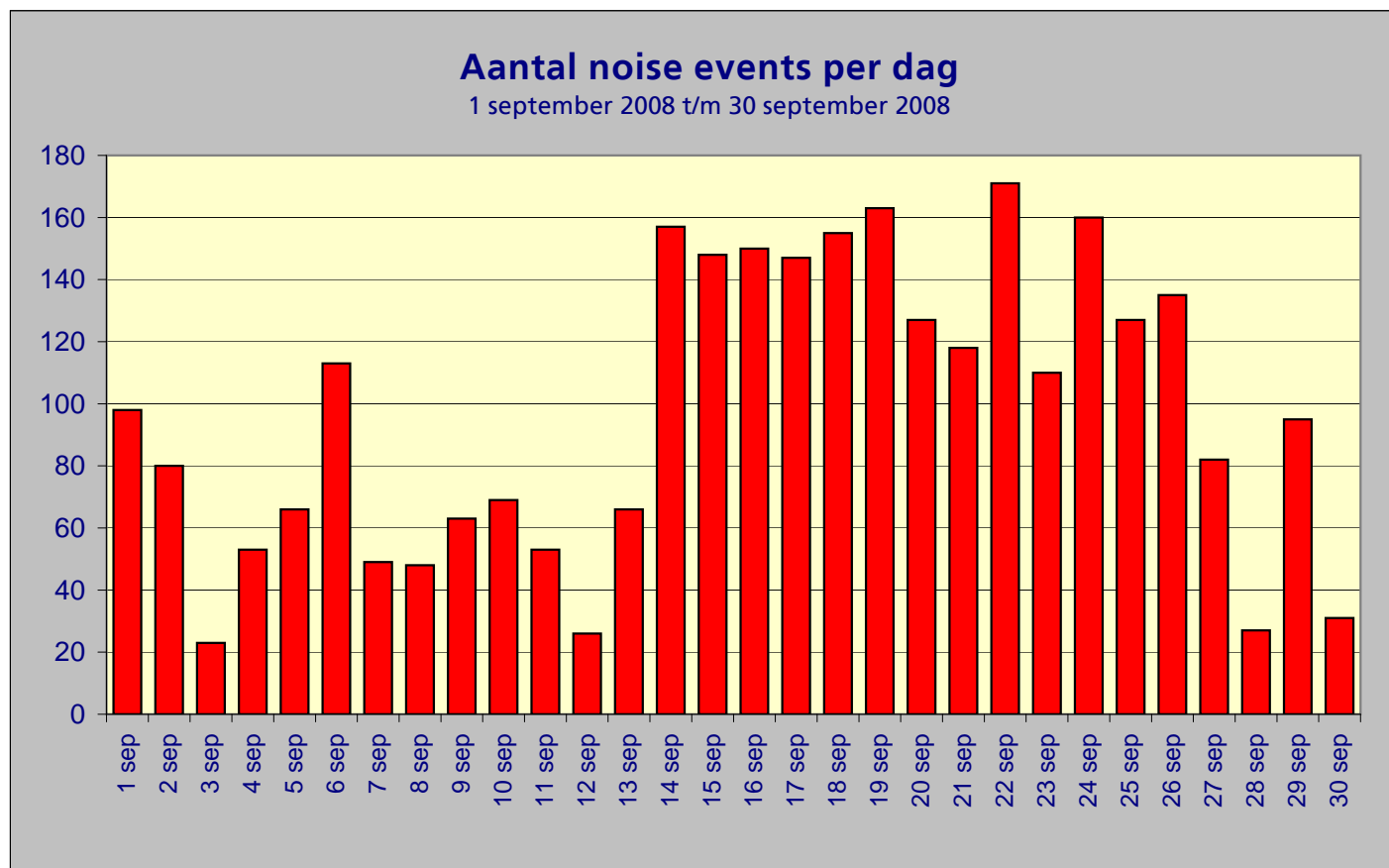
Aantal noise events per hoogtecategorie

| Hoogte        | Aantal      |
|---------------|-------------|
| <1000m        | 2857        |
| 1000-1100m    | 9           |
| 1100-1200m    | 1           |
| 1200-1300m    | 4           |
| 1300-1400m    | 2           |
| >1400m        | 37          |
| <b>Totaal</b> | <b>2910</b> |



### Aantal noise events per dag

| Dag    | Aantal |
|--------|--------|
| 1 sep  | 98     |
| 2 sep  | 80     |
| 3 sep  | 23     |
| 4 sep  | 53     |
| 5 sep  | 66     |
| 6 sep  | 113    |
| 7 sep  | 49     |
| 8 sep  | 48     |
| 9 sep  | 63     |
| 10 sep | 69     |
| 11 sep | 53     |
| 12 sep | 26     |
| 13 sep | 66     |
| 14 sep | 157    |
| 15 sep | 148    |
| 16 sep | 150    |
| 17 sep | 147    |
| 18 sep | 155    |
| 19 sep | 163    |
| 20 sep | 127    |
| 21 sep | 118    |
| 22 sep | 171    |
| 23 sep | 110    |
| 24 sep | 160    |
| 25 sep | 127    |
| 26 sep | 135    |
| 27 sep | 82     |
| 28 sep | 27     |
| 29 sep | 95     |
| 30 sep | 31     |
|        | 0      |



**Totaal** 2910