

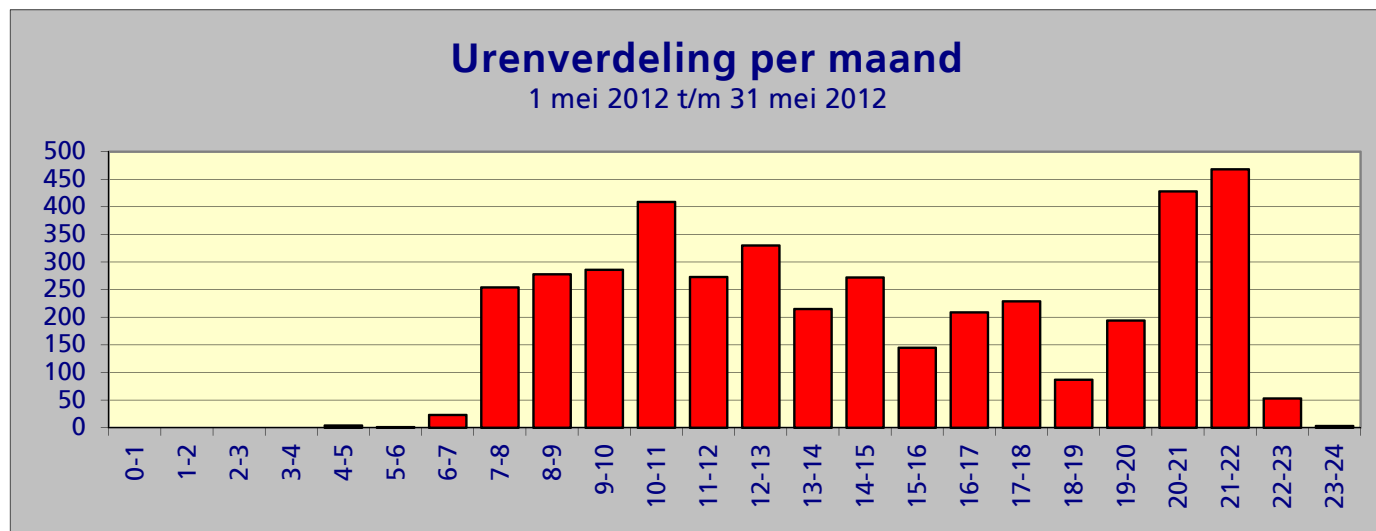
Samenvatting meetgegevens meetpost 92 - Lijnden
Periode: 1 mei 2012 t/m 31 mei 2012

Top 10 grootste LAmax

| Datum | Tijd | LAmax | Sel | Leq | duur | baan | type | A/D |
|-----------|----------|-------|------|------|------|------|------|-----|
| 02-mei-12 | 20:05:25 | 88,6 | 97,4 | 80,2 | 52 | 36C | MD11 | D |
| 22-mei-12 | 19:30:19 | 88,5 | 97,1 | 80,9 | 41 | 36C | B742 | D |
| 12-mei-12 | 15:01:21 | 88,0 | 97,7 | 80,4 | 53 | 36C | B742 | D |
| 02-mei-12 | 10:25:31 | 88,0 | 97,0 | 80,8 | 42 | 36C | A332 | D |
| 21-mei-12 | 17:46:56 | 87,6 | 96,5 | 79,9 | 45 | 36C | MD82 | D |
| 24-mei-12 | 19:45:39 | 86,9 | 96,6 | 80,0 | 46 | 36C | MD82 | D |
| 21-mei-12 | 20:32:58 | 86,9 | 95,0 | 78,2 | 48 | 36C | MD87 | D |
| 21-mei-12 | 17:37:41 | 86,8 | 95,0 | 77,8 | 52 | | | A |
| 24-mei-12 | 17:35:01 | 86,5 | 94,6 | 78,3 | 43 | 36C | MD82 | D |
| 05-mei-12 | 16:17:49 | 86,3 | 97,2 | 80,1 | 52 | 36C | B744 | D |

Maandtotaal verdeeld over etmaal

| Tijdstip | Aantal |
|---------------|-------------|
| 0-1 | 0 |
| 1-2 | 0 |
| 2-3 | 0 |
| 3-4 | 0 |
| 4-5 | 4 |
| 5-6 | 1 |
| 6-7 | 23 |
| 7-8 | 254 |
| 8-9 | 278 |
| 9-10 | 286 |
| 10-11 | 409 |
| 11-12 | 273 |
| 12-13 | 330 |
| 13-14 | 215 |
| 14-15 | 272 |
| 15-16 | 145 |
| 16-17 | 209 |
| 17-18 | 229 |
| 18-19 | 87 |
| 19-20 | 194 |
| 20-21 | 428 |
| 21-22 | 468 |
| 22-23 | 53 |
| 23-24 | 3 |
| Totaal | 4161 |



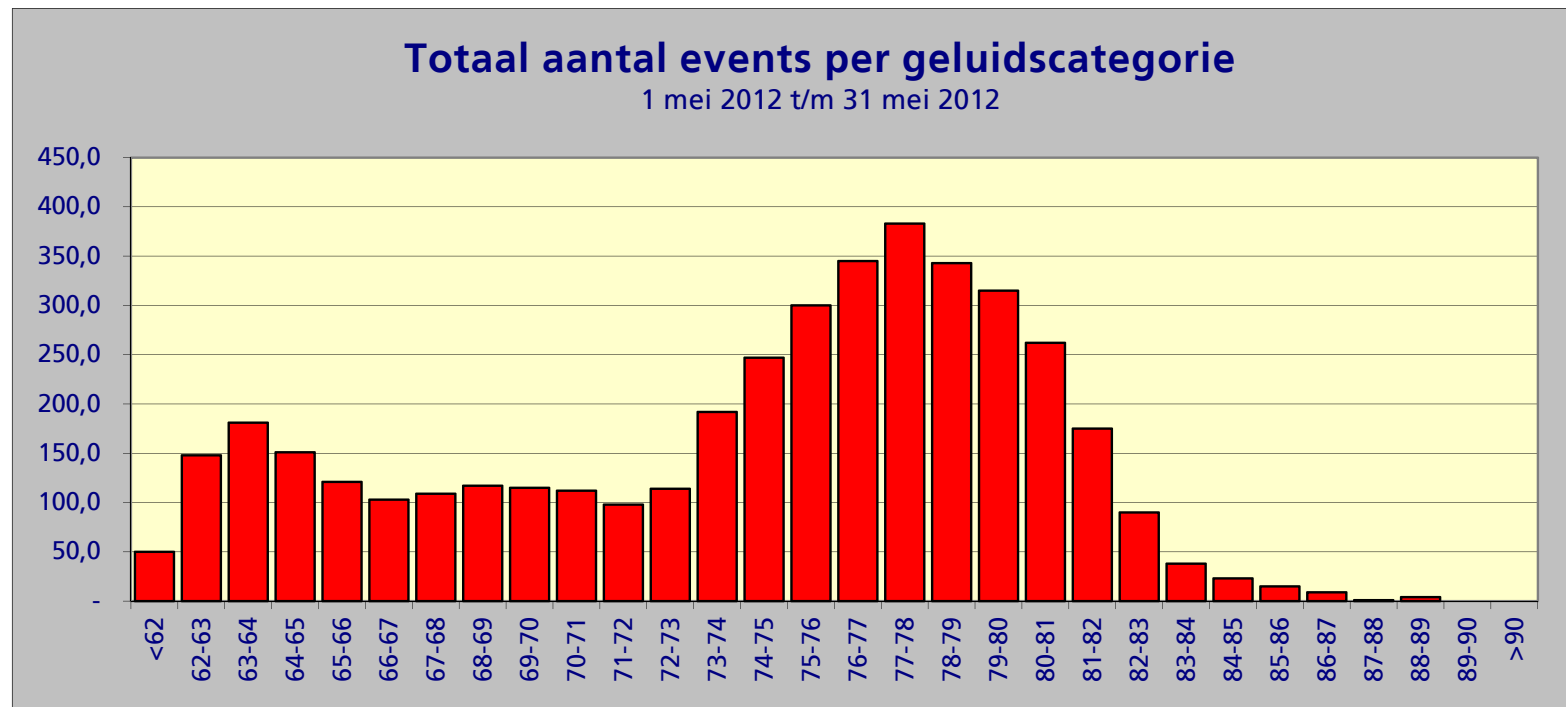
Maandtotaal verdeeld over etmaal

1 mei 2012 t/m 31 mei 2012

| Tijdstip | Aantal |
|---------------|-------------|
| 23 - 06 | 8 |
| 06 - 23 | 4153 |
| Totaal | 4161 |

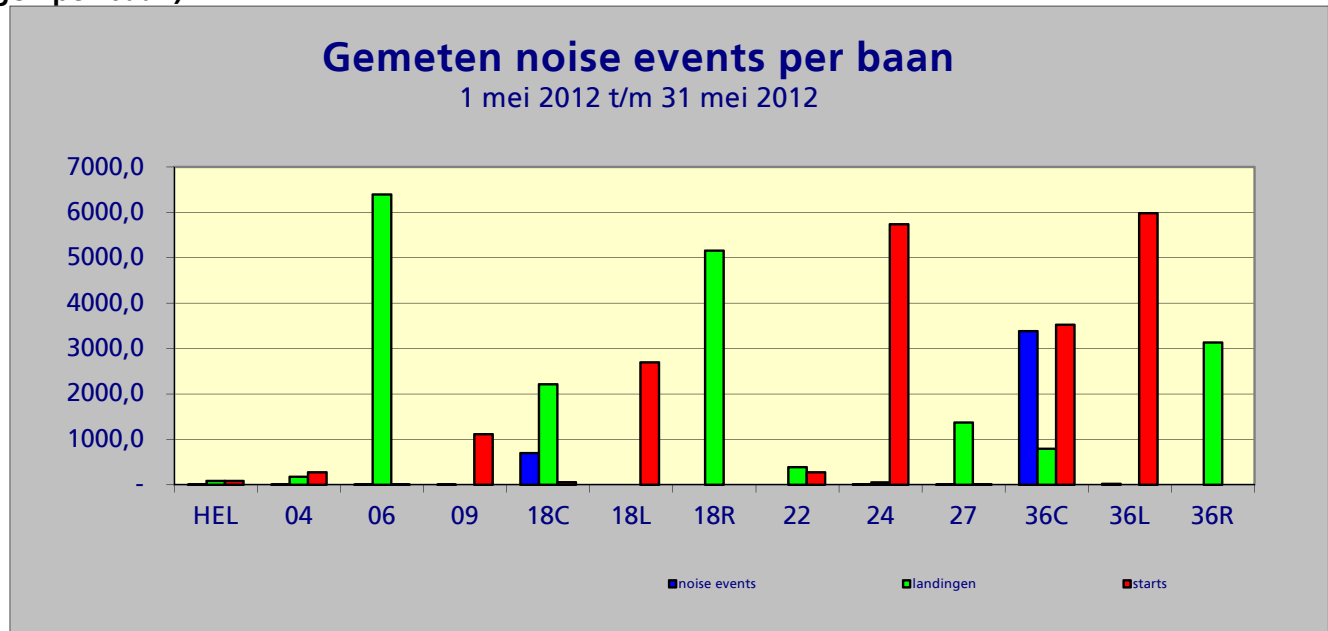
Maandtotaal verdeeld over LAmax

| LAmax | Aantal |
|---------------|-------------|
| <62 | 50 |
| 62-63 | 148 |
| 63-64 | 181 |
| 64-65 | 151 |
| 65-66 | 121 |
| 66-67 | 103 |
| 67-68 | 109 |
| 68-69 | 117 |
| 69-70 | 115 |
| 70-71 | 112 |
| 71-72 | 98 |
| 72-73 | 114 |
| 73-74 | 192 |
| 74-75 | 247 |
| 75-76 | 300 |
| 76-77 | 345 |
| 77-78 | 383 |
| 78-79 | 343 |
| 79-80 | 315 |
| 80-81 | 262 |
| 81-82 | 175 |
| 82-83 | 90 |
| 83-84 | 38 |
| 84-85 | 23 |
| 85-86 | 15 |
| 86-87 | 9 |
| 87-88 | 1 |
| 88-89 | 4 |
| 89-90 | - |
| >90 | - |
| Totaal | 4161 |



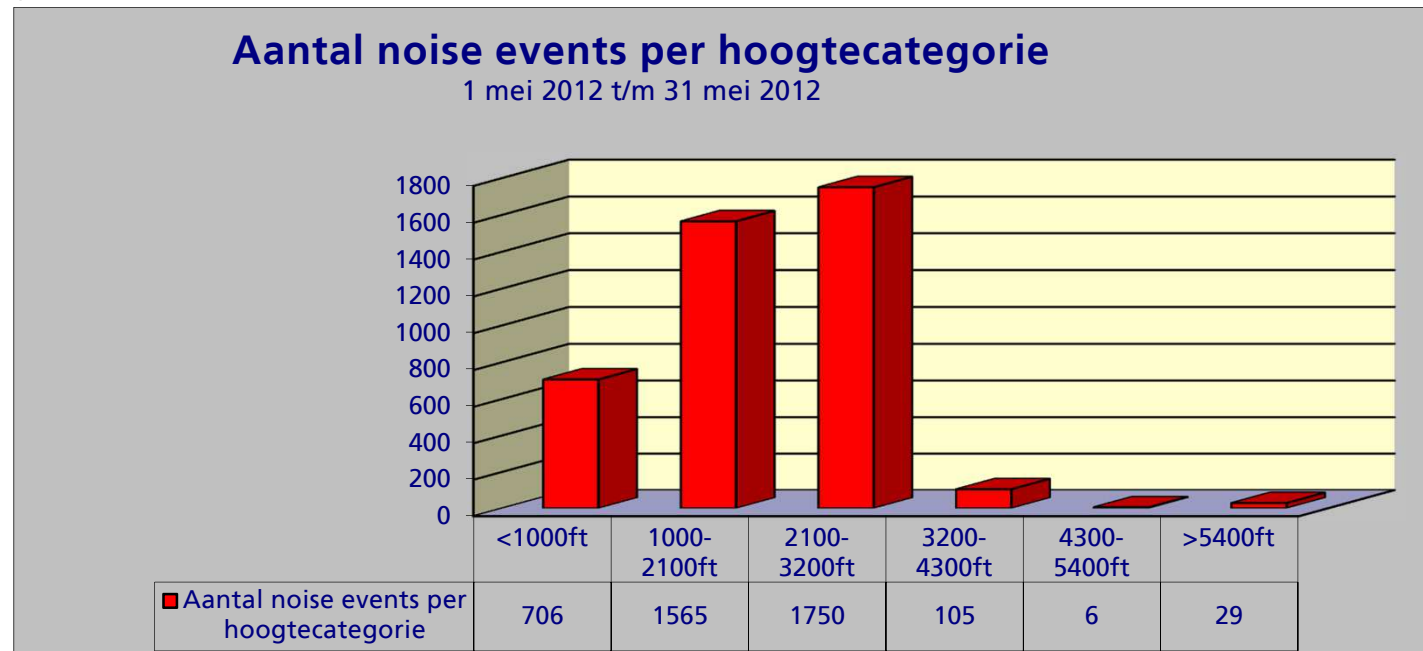
Maandtotaal verdeeld per baan (incl. bewegingen per baan)

| Baan | noise events | landingen | starts |
|---------------|--------------|---------------|---------------|
| HEL | 5 | 83 | 86 |
| 04 | 4 | 177 | 273 |
| 06 | 3 | 6.395 | 7 |
| 09 | 2 | - | 1.114 |
| 18C | 699 | 2.215 | 56 |
| 18L | - | - | 2.696 |
| 18R | - | 5.158 | - |
| 22 | - | 388 | 273 |
| 24 | 10 | 52 | 5.737 |
| 27 | 4 | 1.371 | 12 |
| 36C | 3.384 | 794 | 3.524 |
| 36L | 21 | - | 5.983 |
| 36R | - | 3.135 | - |
| Totaal | 4132 | 19.768 | 19.761 |



Aantal noise events per hoogtecategorie

| Hoogte | Aantal |
|---------------|-------------|
| <1000ft | 706 |
| 1000-2100ft | 1565 |
| 2100-3200ft | 1750 |
| 3200-4300ft | 105 |
| 4300-5400ft | 6 |
| >5400ft | 29 |
| Totaal | 4161 |



Aantal noise events per dag

| Dag | Aantal |
|---------------|-------------|
| 1 mei | 5 |
| 2 mei | 155 |
| 3 mei | 33 |
| 4 mei | 107 |
| 5 mei | 177 |
| 6 mei | 172 |
| 7 mei | 62 |
| 8 mei | 14 |
| 9 mei | 84 |
| 10 mei | 196 |
| 11 mei | 56 |
| 12 mei | 167 |
| 13 mei | 22 |
| 14 mei | 92 |
| 15 mei | 91 |
| 16 mei | 51 |
| 17 mei | 84 |
| 18 mei | 13 |
| 19 mei | 70 |
| 20 mei | 85 |
| 21 mei | 387 |
| 22 mei | 406 |
| 23 mei | 251 |
| 24 mei | 417 |
| 25 mei | 302 |
| 26 mei | 194 |
| 27 mei | 163 |
| 28 mei | 121 |
| 29 mei | 139 |
| 30 mei | 16 |
| 31 mei | 29 |
| Totaal | 4161 |

